



**India Meteorological Department  
(Ministry of Earth Sciences)**

**BULLETIN NO. 03 (BOB/09/2022)**

**TIME OF ISSUE: 0830 HOURS IST**

**DATED: 07.12.2022**

**FROM: INDIA METEOROLOGICAL DEPARTMENT (FAX NO. 24643965/24699216/24623220)**

**TO: CONTROL ROOM, NDM, MINISTRY OF HOME AFFAIRS (FAX.NO. 23093750)**

**CONTROL ROOM NDMA (FAX.NO. 26701729)**

**CABINET SECRETARIAT (FAX.NO.23012284, 23018638)**

**PS TO HON'BLE MINISTER FOR S & T AND EARTH SCIENCES (FAX NO.23316745)**

**SECRETARY, MOES (FAX NO. 24629777)**

**H.Q. (INTEGRATED DEFENCE STAFF AND CDS) (FAX NO. 23005137/23005147)**

**DIRECTOR GENERAL, DOORDARSHAN (23385843)**

**DIRECTOR GENERAL, AIR (23421105, 23421219)**

**PIB MOES (FAX NO. 23389042)**

**UNI (FAX NO. 23355841)**

**D.G. NATIONAL DISASTER RESPONSE FORCE (NDRF) (FAX NO. 26105912, 2436 3260)**

**DIRECTOR, PUNCTUALITY, INDIAN RAILWAYS (FAX NO. 23388503)**

**CHIEF SECRETARY, ANDAMAN & NICOBAR ISLANDS (FAX NO. 03192- 232656)**

**CHIEF SECRETARY, GOVT. WEST BENGAL (FAX NO. 033-22144328)**

**CHIEF SECRETARY, GOVT. OF ODISHA (FAX NO. 0674 -2536660)**

**CHIEF SECRETARY, GOVT. OF ANDHRA PRADESH (FAX NO. 0863-2441029, 08645-246600)**

**CHIEF SECRETARY, GOVT. OF TAMIL NADU (FAX NO. 044-25672304)**

**CHIEF SECRETARY, GOVT. OF PUDUCHERRY (FAX NO. 0413-2337575, 2334145)**

**Sub: Deep Depression over Southeast & adjoining Southwest Bay of Bengal (Pre-cyclone watch for north Tamilnadu, Puducherry and south Andhra Pradesh coasts)**

The Depression over southeast Bay of Bengal moved west-northwestwards with a speed of 12 kmph during past 06 hours, intensified into a Deep Depression and lay centred at 0530 hours IST of today, the 07<sup>th</sup> December, 2022 over Southeast & adjoining Southwest Bay of Bengal, near latitude 8.6°N and longitude 86.4°E, about 570 km east of Trincomalee (Sri Lanka), about 710 km east-southeast of Jaffna (Sri Lanka), about 770 km east-southeast of Karaikal and about 830 km southeast of Chennai.

It is very likely to move west-northwestwards and intensify further gradually into a Cyclonic Storm around 07<sup>th</sup> December evening and reach Southwest Bay of Bengal off north Tamil Nadu-Puducherry & adjoining south Andhra Pradesh coasts by 08th December morning. It will continue to move west-northwestwards towards north Tamil Nadu-Puducherry & adjoining south Andhra Pradesh coasts during subsequent 48 hours.

**Forecast track and intensity are given below:**

<b>Date/Time(IST)</b>	<b>Position (Lat. °N/ long. °E)</b>	<b>Maximum sustained surface wind speed (Kmph)</b>	<b>Category of cyclonic disturbance</b>
07.12.22/0530	8.6/86.4	50-60 gusting to 70	Deep Depression
07.12.22/1130	8.9/85.6	55-65 gusting to 75	Deep Depression
07.12.22/1730	9.2/84.9	60-70 gusting to 80	Cyclonic Storm
07.12.22/2330	9.6/84.3	70-80 gusting to 90	Cyclonic Storm
08.12.22/0530	10.0/83.8	80-90 gusting to 100	Cyclonic Storm
08.12.22/1730	10.7/82.8	80-90 gusting to 100	Cyclonic Storm
09.12.22/0530	11.4/81.7	70-80 gusting to 90	Cyclonic Storm
09.12.22/1730	12.1/80.8	70-80 gusting to 90	Cyclonic Storm

10.12.22/0530	12.8/80.0	50-60 gusting to 70	Deep Depression
10.12.22/1730	13.1/79.4	30-40 gusting to 50	Depression

### Warnings:

#### **(i) Rainfall (warning graphics enclosed)**

- ❖ Light to moderate rainfall at most places with heavy to very heavy falls at isolated places very likely over coastal Tamilnadu, Puducherry & Karaikal and adjoining areas off south coastal Andhra Pradesh on 08<sup>th</sup> December.
- ❖ Light to moderate rainfall at most places with heavy to very heavy rainfall at a few places and extremely heavy rainfall at isolated places very likely over north coastal Tamilnadu, Puducherry and adjoining south Coastal Andhra Pradesh and isolated heavy to very heavy rainfall likely over north interior Tamilnadu and adjoining Rayalaseema on 09<sup>th</sup> December.
- ❖ It is likely to reduce to Light to moderate rainfall at many places with heavy to very heavy rainfall at isolated places likely over north Tamilnadu and Rayalaseema and south Andhra Pradesh on 10<sup>th</sup> December.

#### **(ii) Wind warning:**

- ❖ **Squally wind, speed reaching 50-60 kmph gusting to 70 kmph**, is likely to prevail over Southeast Bay of Bengal during next 24 hours and then reduce to **40-45 kmph gusting to 55 kmph on 8<sup>th</sup> Dec.**
- ❖ **Squally wind, speed reaching 50-60 kmph gusting to 70 kmph** prevailing over Southwest Bay of Bengal, would increase gradually becoming **60-70 kmph gusting to 80 kmph** from 7<sup>th</sup> evening. It would further increase becoming Gale wind, speed reaching **70-80 kmph gusting to 90 kmph**, over the region from 8<sup>th</sup> morning and **80-90 kmph gusting to 100 kmph** during 08<sup>th</sup> evening to 09<sup>th</sup> morning. It would decrease thereafter gradually.
- ❖ **Squally wind, speed reaching 40-50 kmph gusting to 60 kmph**, likely to commence along & off Tamilnadu, Puducherry, south Andhra Pradesh and north Sri Lanka coasts coast from 08<sup>th</sup> December morning, becoming **50-60 kmph gusting to 70 kmph** from 08<sup>th</sup> December evening, **70-80 kmph gusting to 90 kmph** from 09<sup>th</sup> December evening to 10<sup>th</sup> December morning. It is likely to reduce gradually to **50-60 kmph gusting to 70 kmph** by afternoon of 10<sup>th</sup> December and then to **40-50 kmph gusting to 60 kmph** by 10<sup>th</sup> December night.
- ❖ **Squally wind, speed reaching 40-50 kmph gusting to 60 kmph**, likely over Gulf of Mannar from 08<sup>th</sup> December evening becoming **50-60 kmph gusting to 70 kmph** from 09<sup>th</sup> December evening to 10<sup>th</sup> December morning. It is likely to reduce gradually thereafter.

#### **(iii) Sea condition**

- ❖ **Sea condition likely to be rough to very rough** over Southeast Bay of Bengal on 07<sup>th</sup>.
- ❖ **Sea condition likely to be rough to very rough** over Southwest and adjoining areas of Westcentral Bay of Bengal till 7<sup>th</sup> evening and very rough to high thereafter till 10<sup>th</sup> morning and improve gradually thereafter.
- ❖ **Sea condition likely to be rough to very rough** along & off South Andhra Pradesh, Tamil Nadu, Puducherry and Sri Lanka coasts on 07<sup>th</sup>, 08<sup>th</sup> and 10<sup>th</sup> and high on 9<sup>th</sup> December.

#### **(iv) Fishermen Warning (warning graphics enclosed)**

Fishermen are advised not to venture into:

- ❖ Southeast Bay of Bengal on 07th December.
- ❖ Southwest Bay of Bengal during 07<sup>th</sup>-10<sup>th</sup> December
- ❖ Along & off Sri Lanka coast during 07<sup>th</sup>-09<sup>th</sup> December.
- ❖ Along & off Tamilnadu, Puducherry and South Andhra Pradesh coasts and Gulf of Mannar during 07<sup>th</sup>-10<sup>th</sup> December.
- ❖ Fishermen out at sea should return to the coast or move to the safe area.

**(v) Adverse Weather Warning for onshore and off-shore operations**

- ❖ Regulate on-shore and off-shore operations over Southeast Bay of Bengal on 07<sup>th</sup> and over Southwest Bay of Bengal during 07<sup>th</sup>-10<sup>th</sup>; along & off Tamilnadu-Puducherry-South Andhra Pradesh coasts and Gulf of Mannar during 08<sup>th</sup>-10<sup>th</sup> December.

**(vi) Damage expected over Coastal Tamilnadu, Puducherry and adjoining south coastal Andhra Pradesh**

- ❖ Damage to thatched houses/ huts. Unattached metal sheets may fly.
- ❖ Minor damage to power and communication lines.
- ❖ Major damage to Kutcha and some damage to Pucca roads. Flooding of escape routes.
- ❖ Breaking of tree branches, uprooting of small trees. Dead limbs blown from trees.
- ❖ Damage to banana and papaya trees and near coastal agriculture due to salt spray. Damage to paddy and other standing crops.
- ❖ Inundation/localized flooding in low lying areas due to heavy rains
- ❖ Traffic may be disrupted due to poor visibility in association with heavy rain

**(vii) Action suggested over Coastal Tamilnadu, Puducherry and adjoining south coastal Andhra Pradesh**

- ❖ Total suspension of fishing operations during 07<sup>th</sup>-10<sup>th</sup> December.
- ❖ Regulate onshore and off-shore operations during 7-10 Dec.
- ❖ People are advised to be cautious while going outside.
- ❖ Regulate traffic.
- ❖ People should not move nearby to vulnerable structures.

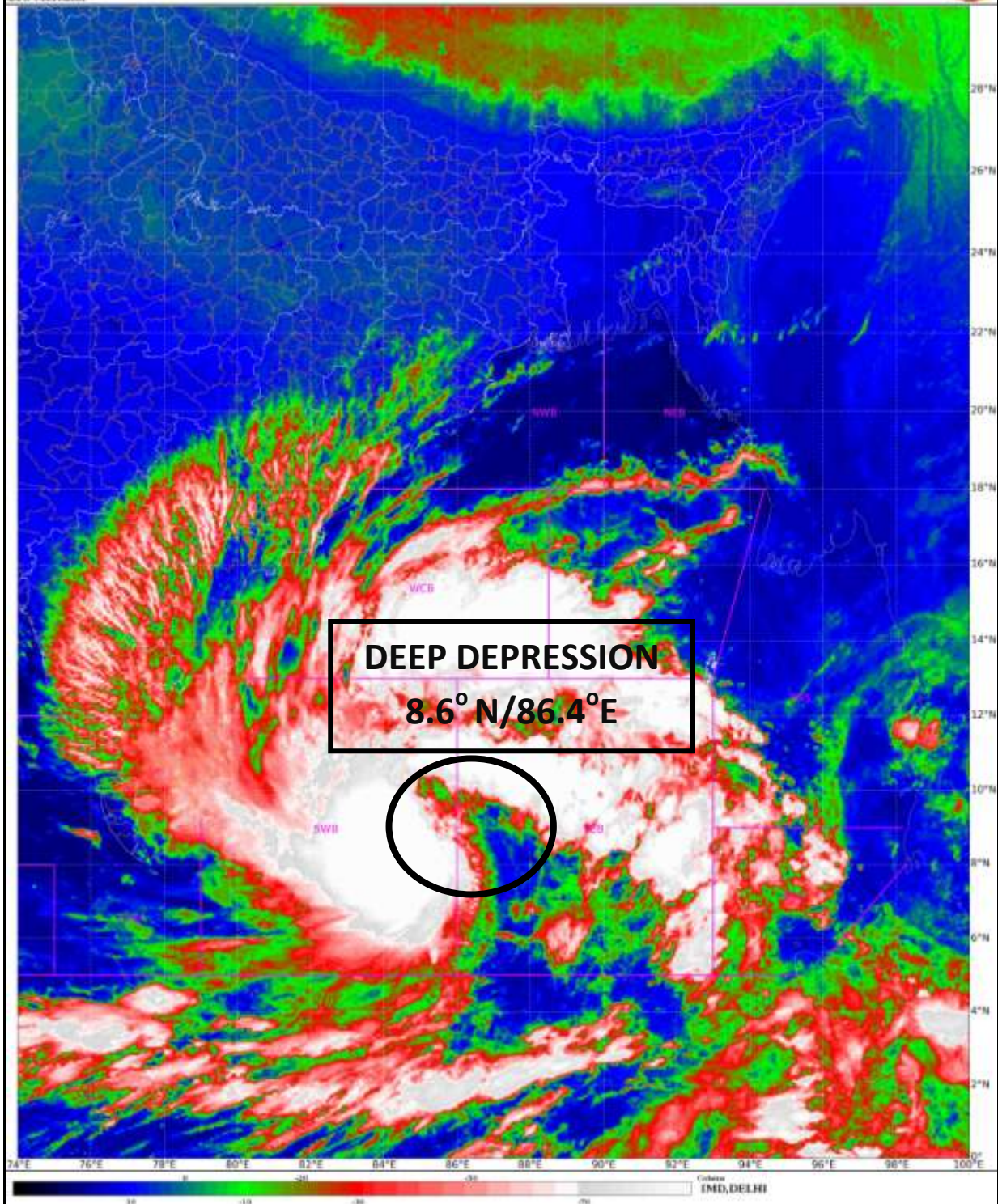
**System is under continuous surveillance and the next bulletin will be issued at 1130 hours IST of today, the 07<sup>th</sup> Dec, 2022.**

**(RK JENAMANI)**  
**Scientist F, Cyclone Warning Division, New Delhi**

*Copy to: ACWC Kolkata/ ACWC Chennai/ CWC Bhubaneswar/CWCVisakhapatnam/MO Port Blair*

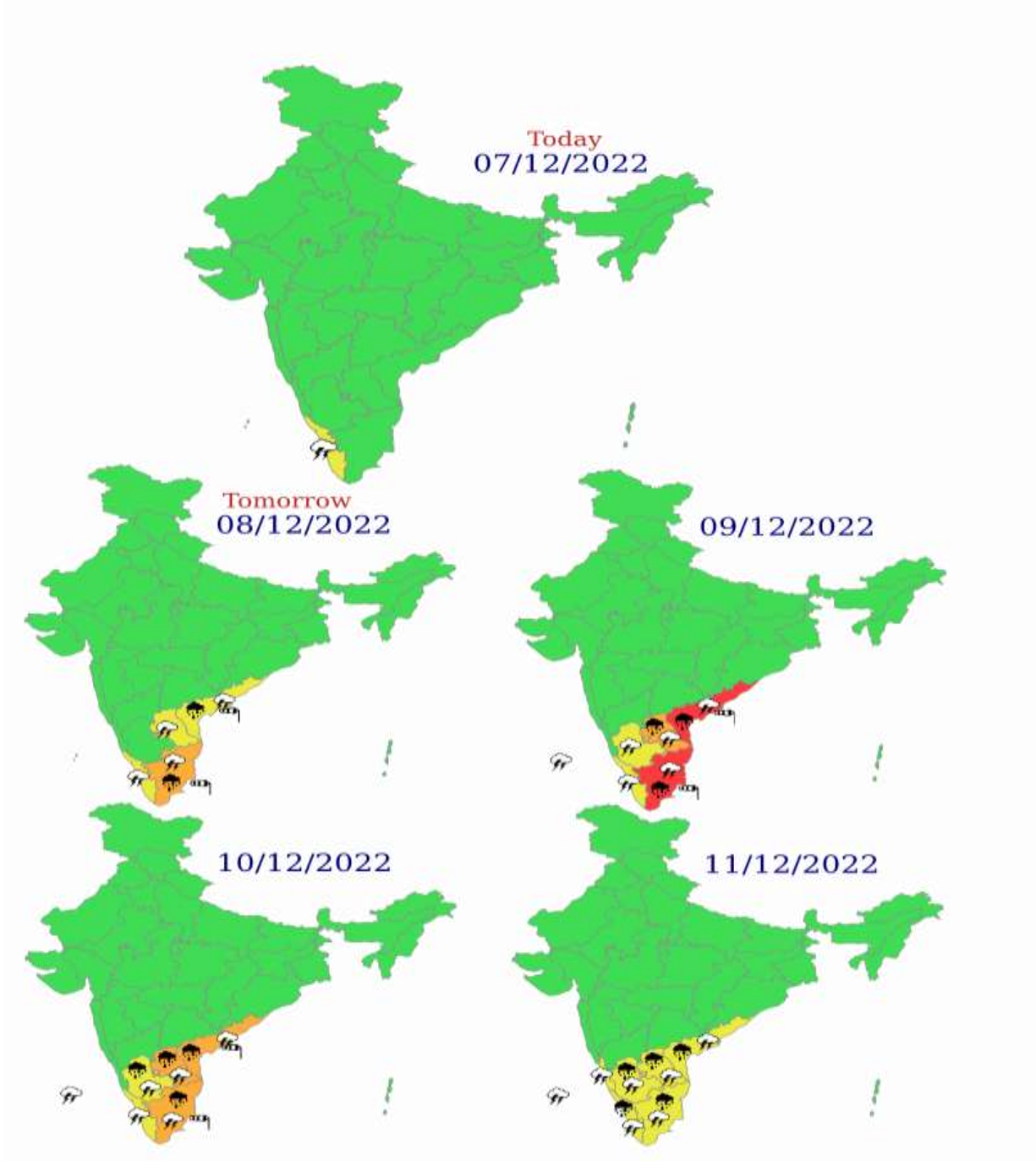
SAT : INSAT-3D IMG  
IMG\_TIR1\_TEMP 10.6 um  
LIC Mercator

07-12-2022/(0100 to 0127) GMT  
07-12-2022/(0630 to 0657) IST





# Multi hazard Warning Graphics

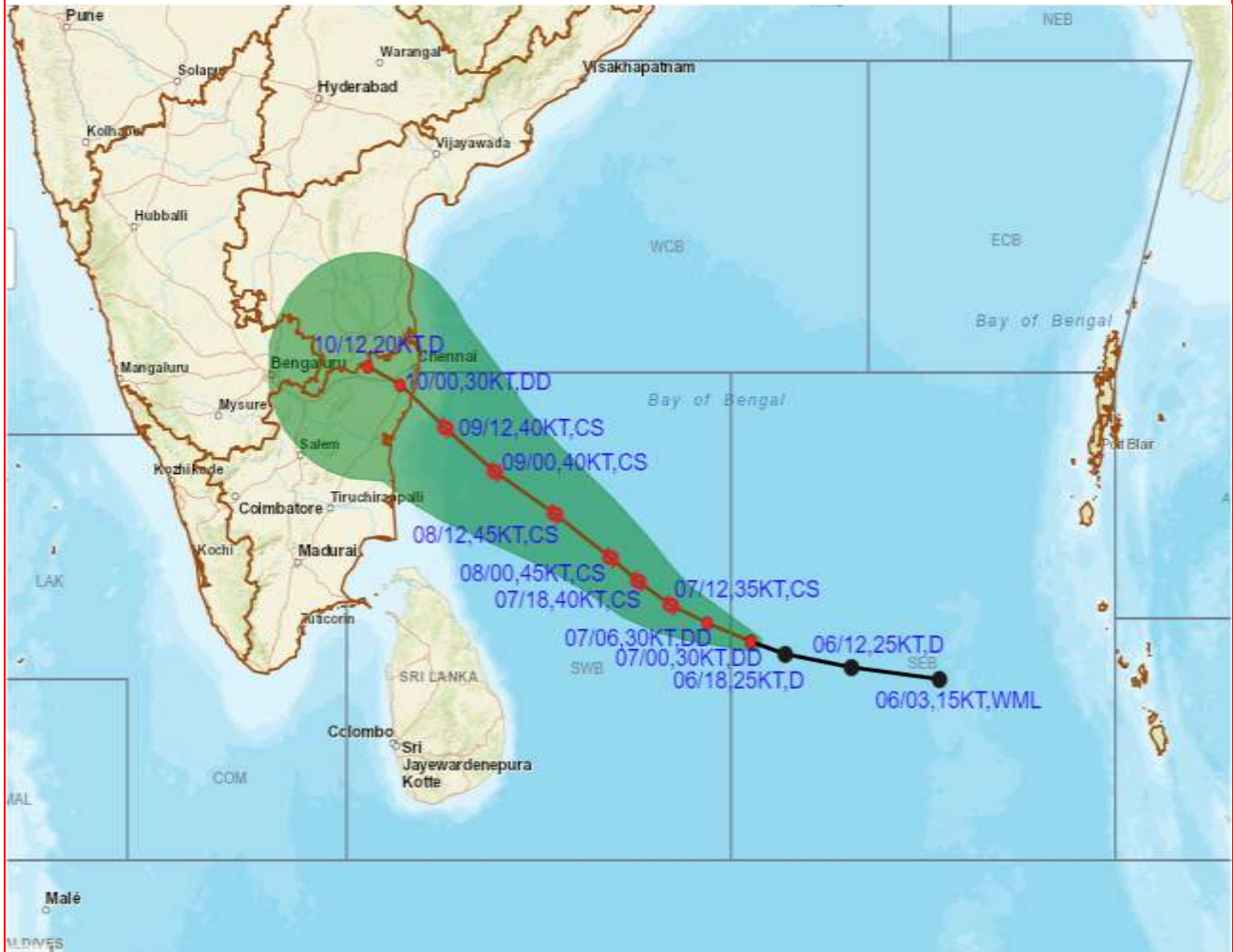


**LEGEND:** Spatial rainfall distribution: Isolated: <25%, A few: 26-50%, Many: 51-75%, Most: 76-100%  
 Rainfall amount (mm): Heavy rain: 64.5 – 115.5, Very heavy rain: 115.6 – 204.4, Extremely heavy rain: 204.5 or more.

- |   |              |   |            |   |              |   |              |
|---|--------------|---|------------|---|--------------|---|--------------|
|  | Heavy Rain   |  | Heavy Snow |  | Thunderstorm |  | Dust Storm   |
|  | Strong Winds |  | Visibility |  | Cyclone      |  | Squall/ Hail |
|  | Frost        |  | Cold Wave  |  | Heat Wave    |  | Sea State    |



**OBSERVED AND FORECAST TRACK OF DEEP DEPRESSION OVER SOUTHEAST AND ADJOINING SOUTHWEST BAY OF BENGAL BASED ON 0000 UTC OF 07<sup>th</sup> DECEMBER, 2022.**

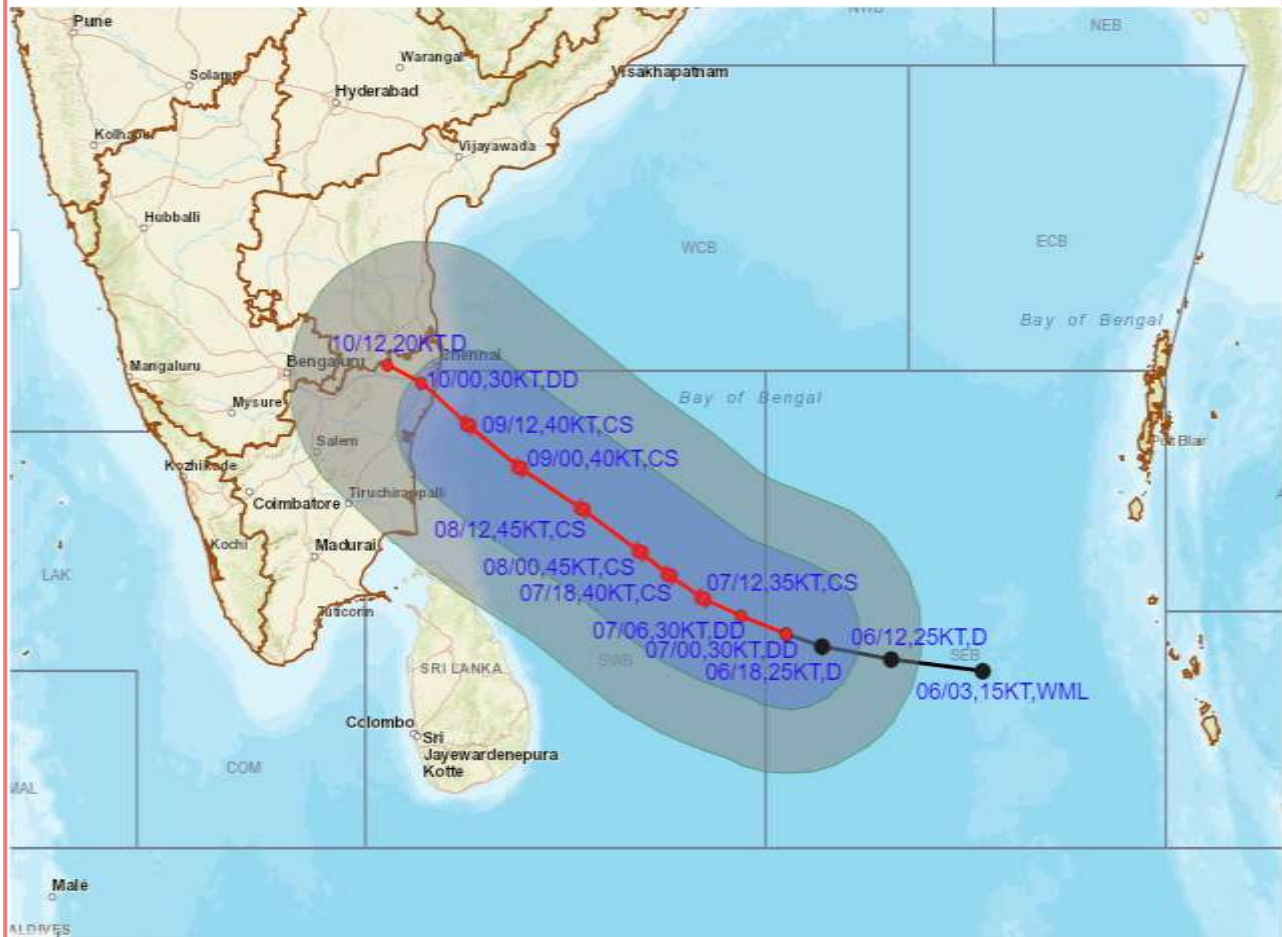


DATE/TIME IN UTC  
 IST=UTC + 0530  
 L: LOW PRESSURE AREA  
 WML: WELL MARKED LOW PRESSURE AREA  
 D: DEPRESSION (17-27 KT)  
 DD: DEEP DEPRESSION (28-33 KT)  
 CS: CYCLONIC STORM (34-47 KT)  
 SCS: SEVERE CYCLONIC STORM (48-63 KT)  
 VSCS: VERY SEVERE CYCLONIC STORM (64-89 KT)  
 ESCS: EXTREMELY SEVERE CYCLONIC STORM (90-119 KT)  
 SuCS: SUPER CYCLONIC STORM ( $\geq$  120 KT)

- LESS THAN 34 KT
- 34-47 KT
- $\geq$  48 KT
- OBSERVED TRACK
- FORECAST TRACK
- CONE OF UNCERTAINTY



**OBSERVED AND FORECAST TRACK ALONGWITH QUADRANT WIND DISTRIBUTION OF DEEP DEPRESSION OVER SOUTHEAST AND ADJOINING SOUTHWEST BAY OF BENGAL BASED ON 0000 UTC OF 07th DECEMBER, 2022.**



DATE/TIME IN UTC  
 IST=UTC + 0530  
 L: LOW PRESSURE AREA  
 WML: WELL MARKED LOW PRESSURE AREA  
 D: DEPRESSION (17-27 KT)  
 DD: DEEP DEPRESSION (28-33 KT)  
 CS: CYCLONIC STORM (34-47 KT)  
 SCS: SEVERE CYCLONIC STORM (48-63KT)  
 VSCS: VERY SEVERE CYCLONIC STORM (64-89 KT)  
 ESCS: EXTREMELY SEVERE CYCLONIC STORM (90-119 KT)  
 SuCS: SUPER CYCLONIC STORM ( $\geq 120$  KT)

● LESS THAN 34 KT  
 ○ 34-47 KT  
 ●  $\geq 48$  KT  
 — OBSERVED TRACK  
 — FORECAST TRACK  
 — CONE OF UNCERTAINTY  
 AREA OF MAXIMUM SUSTAINED WIND SPEED:  
 ■ 28-33 KT (52-61 KMPH)  
 ■ 34-49 KT (62-91 KMPH)  
 ■ 50-63 KT (92-117 KMPH)  
 ■  $\geq 64$  KT ( $\geq 118$  KMPH)

**IMPACT OVER THE SEA**

MSW (knot/kmph)	Impact	Action
28-33 (52-61)	Very rough seas	Total suspension of fishing operations
34-49 (62-91)	High to very high seas	Total suspension of fishing operations
50-63 (92-117)	Very high seas	Total suspension of fishing operations
$\geq 64$ ( $\geq 118$ )	Phenomenal	Total suspension of fishing operations



## Fishermen warning graphics



	Squally WX with wind speed 40-45 kmph gusting to 55 kmph
	Squally WX with wind speed 45-55 kmph gusting to 65 kmph
	Squally wind speed 45-55 kmph gusting to 65 kmph
	Squally wind with wind speed 55-65 kmph gusting to 75 kmph
	Gale wind with wind speed 70-80 kmph gusting to 90 kmph
	Gale wind with wind speed 89-90 kmph gusting to 100 kmph

Fishermen are advised not to venture into the marked areas.